

# DESKTOP TO WEB M I G R A T I O N

## Painless and Quickest Migration of Desktop Applications and Teams to Efficient Java Web Development

**Quick Start for  
Desktop Developers**

**Modernization of  
Old Legacy Applications**

**Efficiency in All Stages  
of Web Development**

Desktop-to-web migration is a process of enabling desktop developers to start instantly with efficient web development. Quick and painless migration to Java web technology includes automatic conversion of existing applications to be enriched with modern business components and a complete framework for efficient development of enterprise Java web applications.



Powered by  
**Evolution Framework**

### **Don't Pause Your Deliveries**

Write new desktop forms, but start delivering Java web applications from day one.

### **Don't Start From Scratch Again**

Continue developing where you stopped without any legacy maintenance problems.

### **Use the Complete Framework**

We have collected all of the puzzles for you. Just drag and drop powerful controls.

### **Protect Your Business Know-How**

Avoid outsourcing web development, get only technical help.

### **Protect the Existing Workforce**

Change only the technology, not your team. Keep your desktop-like efficiency.

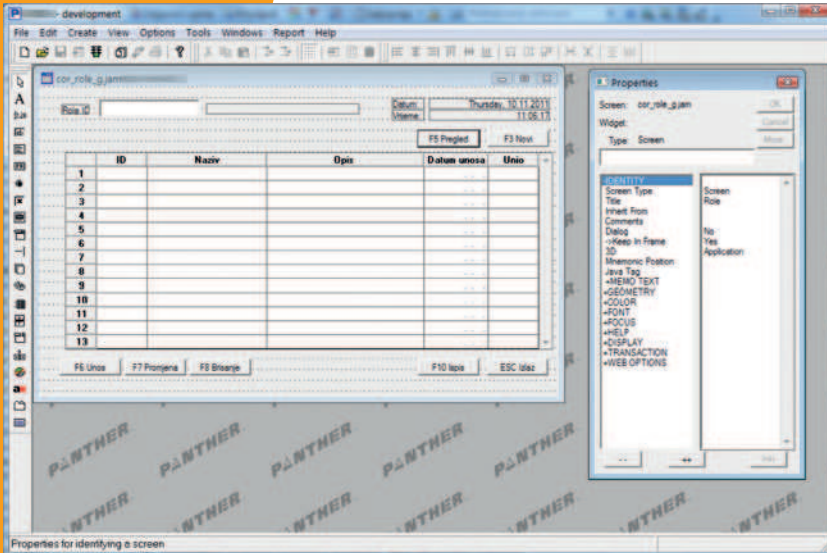
### **Avoid Complex Web Technologies**

Focus on solving business problems, not technical web hassles.

# Evolution of your development

## Form layout conversion

The automatic converter converts original form layout to Form XML format which is used by Evolution Framework's Visual Editor, preserving existing functionalities and allowing applications to be further upgraded.



Desktop IDE with the old form layout

### Old Layout - Starting Point

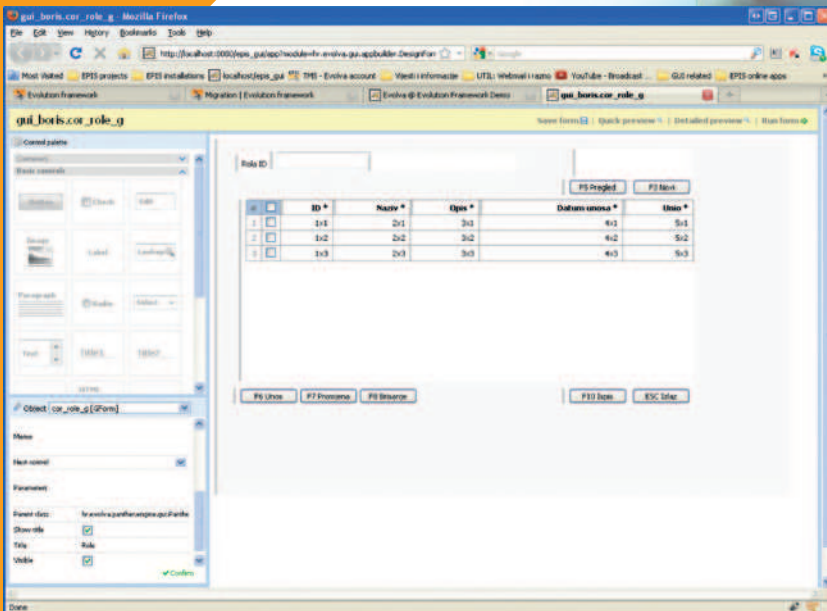
The first step of the migration is the conversion of the form layout that consist of controls.

Tools like Visual Basic, Delphi, Visual C++ or Panther store layout in binary or different text-formatted files. The converter can convert both text based and desktop (GUI) based layouts.

### Panther-to-web Converter

A software tool for automatic conversion of old Panther forms to Java web forms.

## Final goal



Evolution Framework Visual Editor

### Web Based Visual Editor

Evolution Framework's visual form editor is a web-based tool that allows editing form layouts that consist of x/y, vertical and horizontal containers with controls. This is the most important tool in developing business applications which typically consist of many forms.

### Drag-and-Drop Powerful Controls

Use basic controls, block controls, invisible controls and many modern features like document or workflow management simply by drag'n'dropping controls from a control palette.

### Plug-in Architecture and Control Wizards

If you are familiar with HTML, CSS and JavaScript, the plug-in architecture of Evolution Framework allows the creation of your own controls and the customization of existing controls by adding new properties and functionalities. New control wizards are available.

# Automatic code conversion

```

cor_role_g.java
@package hr.evolva.test.gui;
import hr.evolva.test.gui.generated.*;
import hr.evolva.panther.engine.*;
import hr.evolva.gui.controls.*;
12/**
13 *
14 * @author hr.evolva.panther.converter.EJPLGenerator
15 * @version 25.01.2012 10:04:38
16 */
17public class cor_role_g extends pdm_cor_role_g {
18
19 //.....
20 public int ulaz() throws Exception
21 {
22 // obsolete: call maksimiziraj_screen.jsp
23 pregled();
24
25 return 0;
26 }
27
28 //.....
29 public int pregled() throws Exception
30 {
31 if (sm_s_val() != 0)
32 return 0;
33
34 service_call ("cor_role_s", new Object[] {in_rola_id, in_rola_naziv}, m
35
36 if (g_tp_svc != G_TP_OK)
37 return -1;
38
39 return 0;
40 }
41
42 //.....
43 public int novi() throws Exception
44 {
45 in_rola_id.set("");
46 sm_n_gofield("in_rola_id");
47
48 return 0;
49 }
50
}

Lister: [D:\EPIS_products\GUI\epis_gui\modules\m_panther\temp\cor_role_g_jpl_clean]
File Edit Options Encoding Help
//.....
proc ulaz()
call maksimiziraj_screen.jsp
call pregled()
return 0
//.....
proc pregled ()
if sm_s_val()=0
return
service_call "cor_role_s" ((in_rola_id, in_rola_naziv), {...})
if g_tp_svc != G_TP_OK
return -1
return
//.....
proc novi()
in_rola_id = ""
call sm_n_gofield("in_rola_id")
return
//.....

```

The code conversion preserves the business value of your old code, but also serves as a learning tool for developers. By comparing the converted code with the original one, developers learn what it takes to start delivering their own web applications in the shortest time possible.

Comparison of the Java converted code (left) and the original code (right)

# efficient web development

## Evolution Framework's engine components:

### Java Code Generator

Generates Java class for each form based on the Visual Editor layout so that all controls are accessible to the Java programmer.

### HTML Render Engine

Renders the initial HTML/JavaScript form for display in the web browser where the form is ready for AJAX communication.

### AJAX/Java Engine

A communication mechanism that sends all events like button click or grid row doubleclick to a Java form event code written by the Java programmer.

### Object Cache

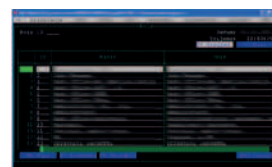
Takes care of Java form persistence through database or file system in cluster environments.

Don't worry about HTML, CSS, JavaScript and AJAX. Write Java code only.

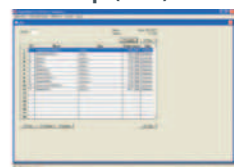
## Migration steps

- 1 Convert your desktop applications to Java web applications
- 2 Use the converter as a learning tool to deliver web forms
- 3 Use powerful enterprise-level Java web framework

Text based form



Desktop (GUI) form



desktop-to-web converter

Web/Java form



Web/Java form



# Powered by Evolution Framework

## Proven Technology

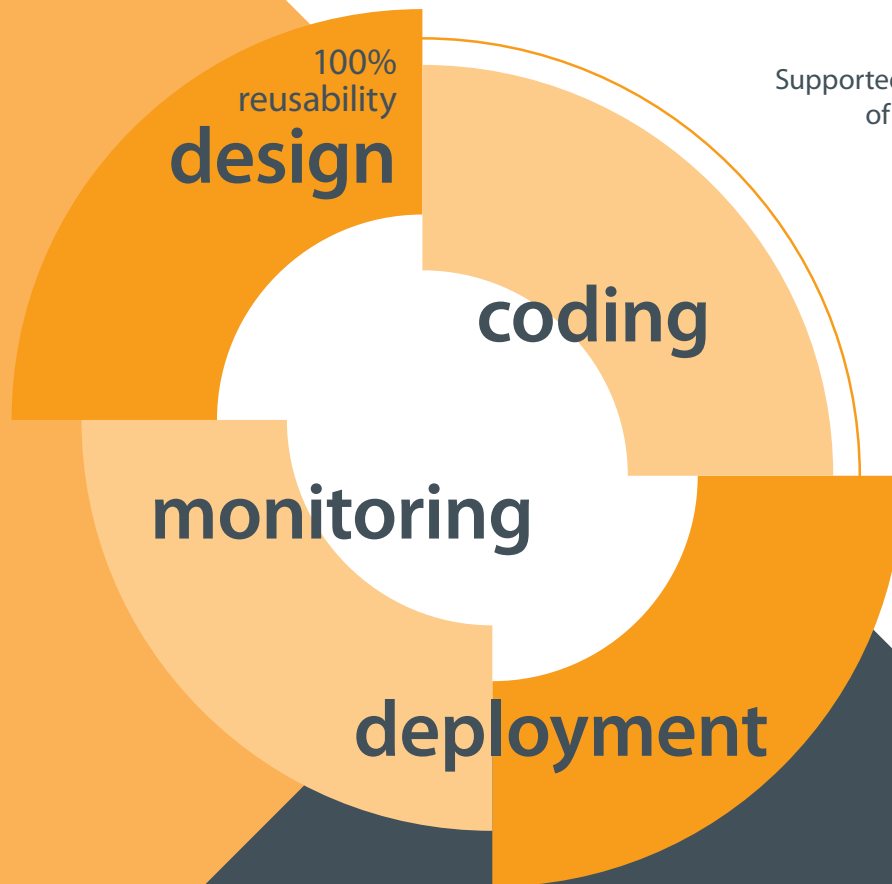
Implemented and stress-tested on enterprise level customers in cluster environments.



Special prize as one of the most innovative Croatian ICT projects



Supported by the Business Innovation Center of Croatia as an innovative ICT project



More information

about the migration and the converter:

[www.evolution-framework.com/migration](http://www.evolution-framework.com/migration)

about Evolution Framework:

[www.evolution-framework.com](http://www.evolution-framework.com)



**Evolve**

Varazdin | Croatia

tel: +385 42 658 550

fax: +385 42 658 551

e-mail: [info@evolva.hr](mailto:info@evolva.hr)